

Clarke®



110V LED WORKLIGHT

MODEL NO: SMD2700/1

PART NO: 4003645

ASSEMBLY & USER INSTRUCTIONS



UK
CA | CE

ORIGINAL INSTRUCTIONS

GC0225

INTRODUCTION

Thank you for purchasing this CLARKE portable LED floorstanding floodlight, suitable for both indoor and outdoor use.

Before attempting to use this product, please read this manual thoroughly and follow the instructions carefully. In doing so you will ensure the safety of yourself and that of others around you, and you can look forward to your purchase giving you long and satisfactory service.

SPECIFICATIONS

Model	SMD2700-1 (110v)
Dimensions (W x D x H)	210 x 140 x 275 mm
Weight	1.15 kg
Light Source	SMD LED array
Operating Temperature	-10 to +45oC
Input power	30 W
Light Output (luminous flux)	2700 @ 1m (lumen)
Power Supply	110V/ 50 HZ
Insulation Class	Class 1
Ingress Protection Rating	IP65
Energy Efficiency Class	F
Colour Temperature	6500 K
Weighted Energy Consumption	30 kWh/1000h
Efficiency	90 Lm/W
Life Expectancy of LEDs	30,000 hours

SAFETY PRECAUTIONS

1. This worklight must not be immersed in water.
2. **DO NOT** look directly into the lamp when switched on as this can damage the eyes.
3. **DO NOT** use this worklight if it has a broken lens, casing or damaged cable.
4. **ALWAYS** unplug the worklight before moving it or performing maintenance. Do not touch the lamp when your hands are wet.
5. **DO NOT** attempt to disassemble or repair the worklight.
6. **DO NOT** leave the worklight unattended when switched on. Always unplug the worklight when it is not in use.
7. **ALWAYS** unplug the worklight by holding the plug, **NEVER** only the cable.
8. **NEVER** use the worklight if the cable or plug are damaged.
9. Ensure the lamp is a safe distance from other objects in the workplace.
10. Never use unauthorized accessories or attachments which can cause personal injury or damage to the product.

GUARANTEE

This product is guaranteed against faulty manufacture for a period of 12 months from the date of purchase. Please keep your receipt which will be required as proof of purchase.

This guarantee is invalid if the product is found to have been abused or tampered with in any way, or not used for the purpose for which it was intended.

Faulty goods should be returned to their place of purchase, no product can be returned to us without prior permission. This guarantee does not effect your statutory rights.

ENVIRONMENTAL RECYCLING POLICY

Through purchase of this product, the customer is taking on the obligation to deal with WEEE in accordance with the WEEE regulations in relation to the treatment, recycling, recovery & environmentally sound disposal of the WEEE.

This means that this product must not be disposed of with general household waste. It must be disposed of according to the laws governing Waste Electrical and Electronic Equipment (WEEE) at a recognised disposal facility.

ELECTRICAL CONNECTIONS



WARNING! READ THESE ELECTRICAL SAFETY INSTRUCTIONS THOROUGHLY BEFORE CONNECTING THE PRODUCT TO A POWER SUPPLY.

This product can be connected to one of the following power supplies:

- 110V generator
- 110V isolating transformer
- 110V site supply
- 230V generator via a 110V transformer.

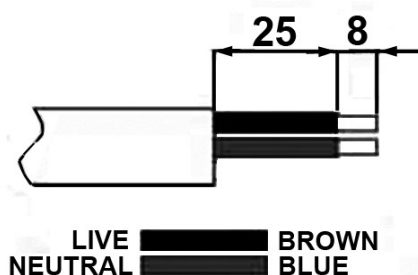
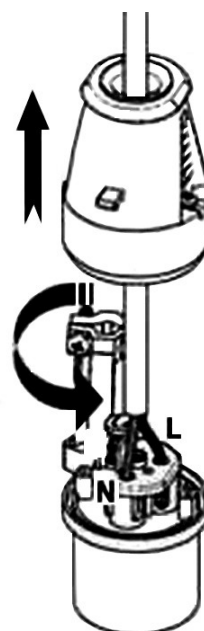
Connecting it to any other power source may cause damage.

This product includes a fitted industrial plug to BS-EN 60309 and cable for use with a 110 volt supply. On no account may a 230V/13amp (BS1363) plug be used.

If using a portable 110V transformer make sure it has a rated capacity sufficient to take the load of the worklight.

Should the plug need changing at any time, ensure a plug of identical specification is used and proceed as follows:

1. Undo the socket screws & remove the rear section.
2. Rotate the cable clamp clear of the terminals.
3. Feed the cable through the rear gland in the plug.
4. Remove the cable sheath to the required lengths as shown in the diagram.
5. Terminate the correct wires in the correct terminal blocks as shown.
6. Remove the cable clamp screws. Clip the cable clamp back into position and place the clamp around the outer sheath of the cable. Replace the screws and tighten until the cable is securely held.
7. Replace the rear cover and tighten the cover screws.

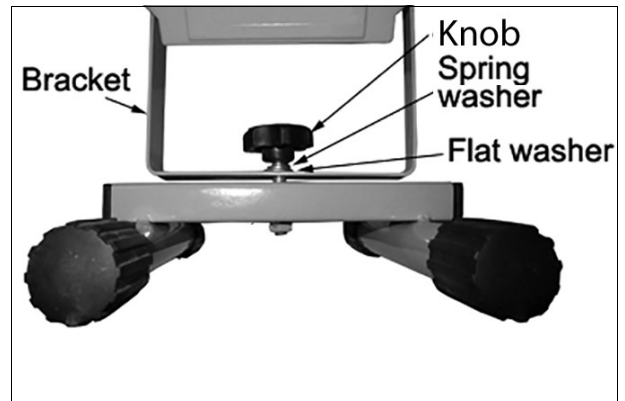


If in any doubt, consult a qualified electrician.

DO NOT attempt any repairs yourself. The user should purchase a suitable connecting lead which is compatible with the appliance socket. The length should give mobility to the worklight but without becoming a trip hazard.

ASSEMBLY & MOUNTING

1. Place the stand on a flat surface.
2. Use the locking knob, flat washer and spring washer to secure the bracket on the bottom of the stand.
3. Turn the bracket to a suitable direction and tighten the locking knob firmly.



ADJUSTING THE LIGHT DIRECTION

The work light head can be tilted vertically up to 30° down or 90° up.

To adjust the light direction, adjust the work light head to the desired position.

TURN THE LED WORK LIGHT ON

Before working with the work light, check that the voltage shown on the light's model plate is the same as the mains voltage being used.

The work light head is NOT equipped with an ON/OFF

Connect the plug to the power supply, the work light can be light.

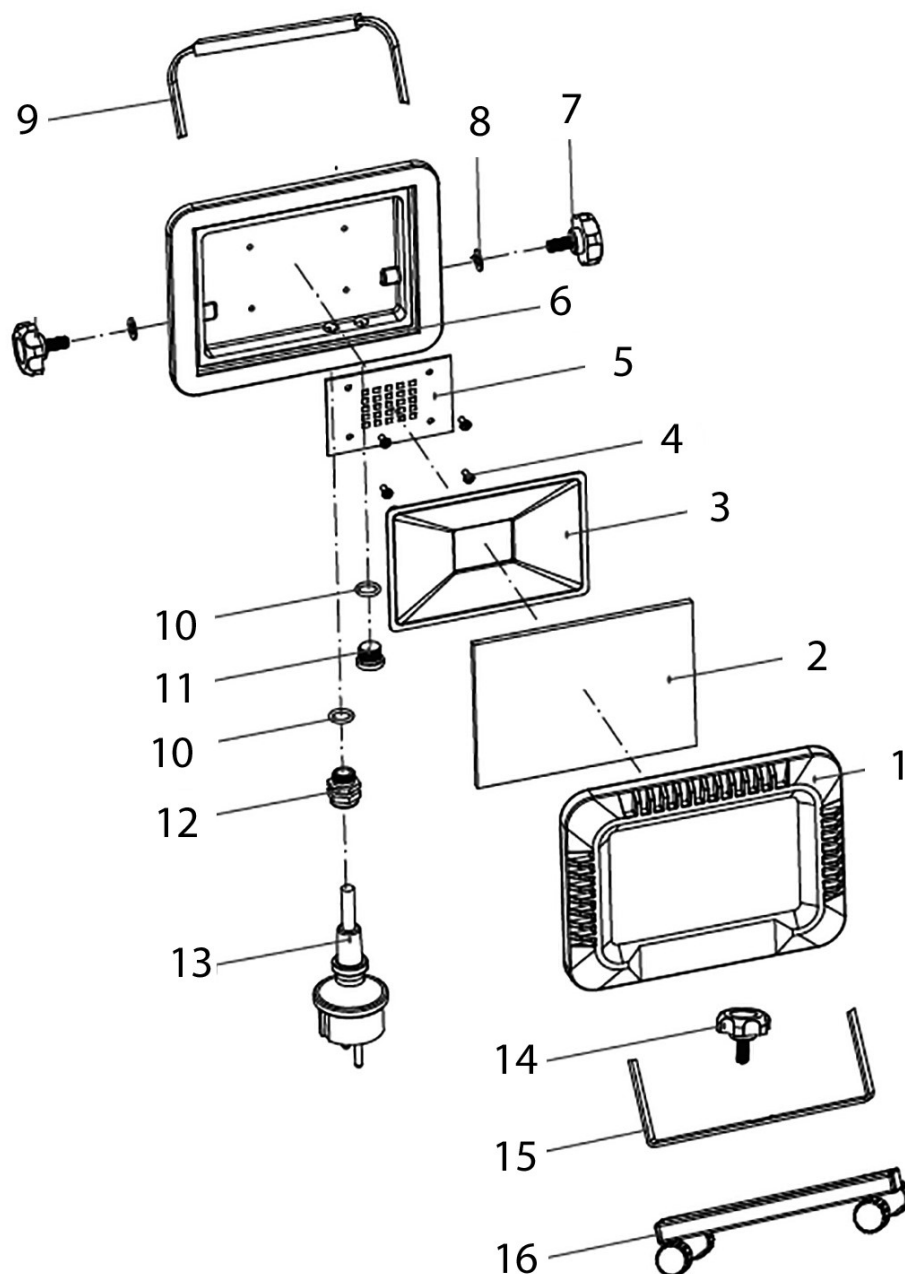
- The worklamp can be swivelled if required by loosening the screw knob.

Tighten the hinge bolts on either side to set the angle of elevation as required.

CARE & STORAGE

1. When not in use, switch off & unplug from the power supply.
2. Store in a secure, dry place, out of the reach of children. **DO NOT** leave it exposed to the elements and avoid direct sunlight, direct heat, rain/moisture etc.
3. Keep the external surfaces clean. Avoid impact damage & **DO NOT** allow this product to come into contact with abrasive or corrosive materials.
4. **DO NOT** use solvents, thinners or alcohol for cleaning, as these chemicals will damage the finish. With the lamp unplugged from the power supply, use a dry cloth to wipe over the lamp components.
5. The LED light source cannot be replaced but has a life expectancy of approximately 30000 hours.
6. **DO NOT** attempt to repair or modify this product or attempt any electrical repair yourself. Consult the Clarke Service Department on 020 8988 7400.

REPLACEMENT PARTS



1	Face frame
2	Tempered glass 4mm
3	Reflector
4	Screws M3 x 6
5	LED panel
6	Housing
7	Angle adjusting knob M6
8	Washer M6

9	Carrying handle
10	O-ring
11	Waterproof end cap
12	Waterproof cable gland
13	Cable with plug
14	Stand locking knob M6
15	Lower bracket
16	H-stand

DECLARATIONS OF CONFORMITY



Hemncill Street, Epping, Essex, CM16 4LG

DECLARATION OF CONFORMITY

This is an important document and should be retained.

We hereby declare that this product(s) complies with the following legislation:

2014/30/EU	Electromagnetic Compatibility Directive
2014/35/EU	Low Voltage Directive
2011/65/EU	Restriction of Hazardous Substances (RoHS) Directive

The following standards have been applied to the product(s):

EN 61000-3-3:2013+A1:2019+A2:2021, EN IEC 61000-3-2:2019+A1:2021, EN 62493:2015+A1:2022,
EN IEC 55015:2019+A1:2020, IEC 62321-4:2013+A1:2017, IEC 62321-2:2021, IEC 62321-5:2013,
EN IEC 60598-1:2021+A1:2022, IEC 62321-3-1:2013, IEC 62321-7-1:2015, IEC 62321-7-2:2017,
EN IEC 62031:2020+A1:2021, EN IEC 61547:2023, EN 60598-2-4:2018, IEC 62321-6:2015,
IEC 62321-8:2017, EN 62321-3-1:2014, EN 62321-1:2013, EN 62321-5:2014,
EN 62321-4:2014/A1:2017

The technical documentation required to demonstrate that the product(s) meet(s) the requirement(s) of the aforementioned legislation has been compiled and is available for inspection by the relevant enforcement authorities.

The UKCA mark was first applied in: 2025

Product Description: LED Light
Model Number(s): SMD2700/1
Serial/Batch Number: Refer to product/packaging label
Date of Issue: 13/02/2025

Signed:

J.A. Clarke
Director

SMD2700-1 UKCA Clarke DOC 021325

Page 1 of 1



Fitzwilliam Hall, Fitzwilliam Place, Dublin 2

DECLARATION OF CONFORMITY

This is an important document and should be retained.

We hereby declare that this product(s) complies with the following legislation:

2014/30/EU	Electromagnetic Compatibility Directive
2014/35/EU	Low Voltage Directive
2011/65/EU	Restriction of Hazardous Substances (RoHS) Directive

The following standards have been applied to the product(s):

EN 61000-3-3:2013+A1:2019+A2:2021, EN IEC 61000-3-2:2019+A1:2021, EN 62493:2015+A1:2022,
EN IEC 55015:2019+A1:2020, IEC 62321-4:2013+A1:2017, IEC 62321-2:2021, IEC 62321-5:2013,
EN IEC 60598-1:2021+A1:2022, IEC 62321-3-1:2013, IEC 62321-7-1:2015, IEC 62321-7-2:2017,
EN IEC 62031:2020+A1:2021, EN IEC 61547:2023, EN 60598-2-4:2018, IEC 62321-6:2015,
IEC 62321-8:2017, EN 62321-3-1:2014, EN 62321-1:2013, EN 62321-5:2014,
EN 62321-4:2014/A1:2017

The technical documentation required to demonstrate that the product(s) meet(s) the requirement(s) of the aforementioned legislation has been compiled and is available for inspection by the relevant enforcement authorities.

The CE mark was first applied in: 2025

Product Description: LED Light
Model Number(s): SMD2700/1
Serial/Batch Number: Refer to product/packaging label
Date of Issue: 13/02/2025

Signed:

J.A. Clarke
Director

SMD2700-1 CE Clarke DOC 021325

Page 1 of 1

A SELECTION FROM THE VAST RANGE OF

Clarke®

QUALITY PRODUCTS



AIR COMPRESSORS
From DIY to industrial, Plus air tools, spray guns and accessories.

GENERATORS
Prime duty or emergency standby for business, home and leisure.

POWER WASHERS
Hot and cold, electric and engine driven - we have what you need

WELDERS
Mig, Arc, Tig and Spot.
From DIY to auto/industrial.

METALWORKING
Drills, grinders and saws for DIY and professional use.

WOODWORKING
Saws, sanders, lathes, mortisers and dust extraction.

HYDRAULICS
Cranes, body repair kits, transmission jacks for all types of workshop use.

WATER PUMPS
Submersible, electric and engine driven for DIY, agriculture and industry.

POWERTOOLS
Angle grinders, cordless drill sets, saws and sanders.

STARTERS/CHARGERS
All sizes for car and commercial use.



PARTS & SERVICE:

0208 988 7400

Parts Enquiries
Parts@clarkeinternational.com

Servicing & Technical Enquiries
Service@clarkeinternational.com

SALES: UK 01992 565333 or Export 00 44 (0)1992 565335

Clarke® INTERNATIONAL Hemnall Street, Epping, Essex CM16 4LG
www.clarkeinternational.com